

"THIS PLAT TO BE RECORDED  
IN THE R.M.C. OFFICE"

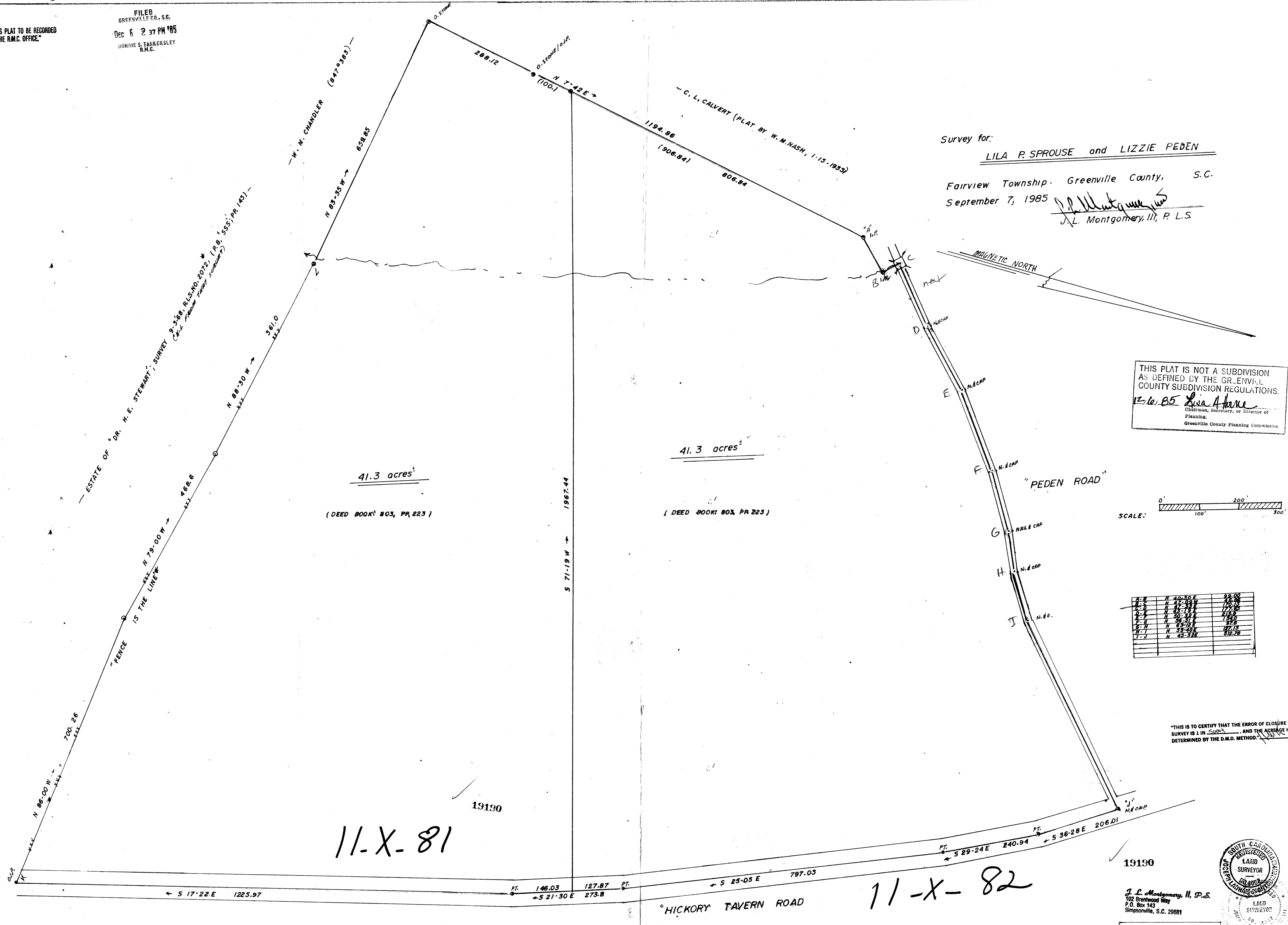
FILED  
GREENVILLE CO., S.C.  
Dec 6 2 37 PM '85  
DONNIE S. TANKERSLEY  
R.M.C.

Survey for:

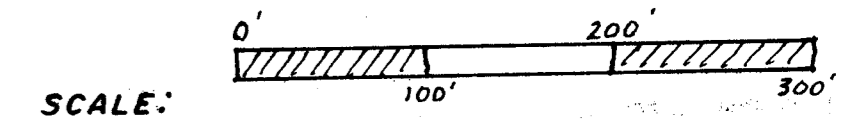
LILA P. SPROUSE and LIZZIE PEDEN

Fairview Township, Greenville County, S.C.  
September 7, 1985

*J.L. Montgomery, II*  
J.L. Montgomery, II, P.L.S.



THIS PLAT IS NOT A SUBDIVISION  
AS DEFINED BY THE GREENVILLE  
COUNTY SUBDIVISION REGULATIONS.  
12/16/85 *Lila A. Home*  
Chairman, Secretary, or Director of  
Planning.  
Greenville County Planning Commission



A-B	N 40-50 E	98.00
B-C	N 47-00 W	26.76
C-D	N 27-00 E	177.15
D-E	N 40-30 E	212.00
E-F	N 36-31 E	57.9
F-G	N 53-40 E	127.19
G-H	N 43-32 E	81.79
H-I	N 43-32 E	81.79
I-J	N 43-32 E	81.79

"THIS IS TO CERTIFY THAT THE ERROR OF CLOSURE OF THIS  
SURVEY IS 1 IN 5000, AND THE ACRES HAS BEEN  
DETERMINED BY THE D.M.D. METHOD."



19190  
J.L. Montgomery, II, P.L.S.  
102 Brentwood Way  
P.O. Box 143  
Simpsonville, S.C. 29881

B.S. 564.1-1-10